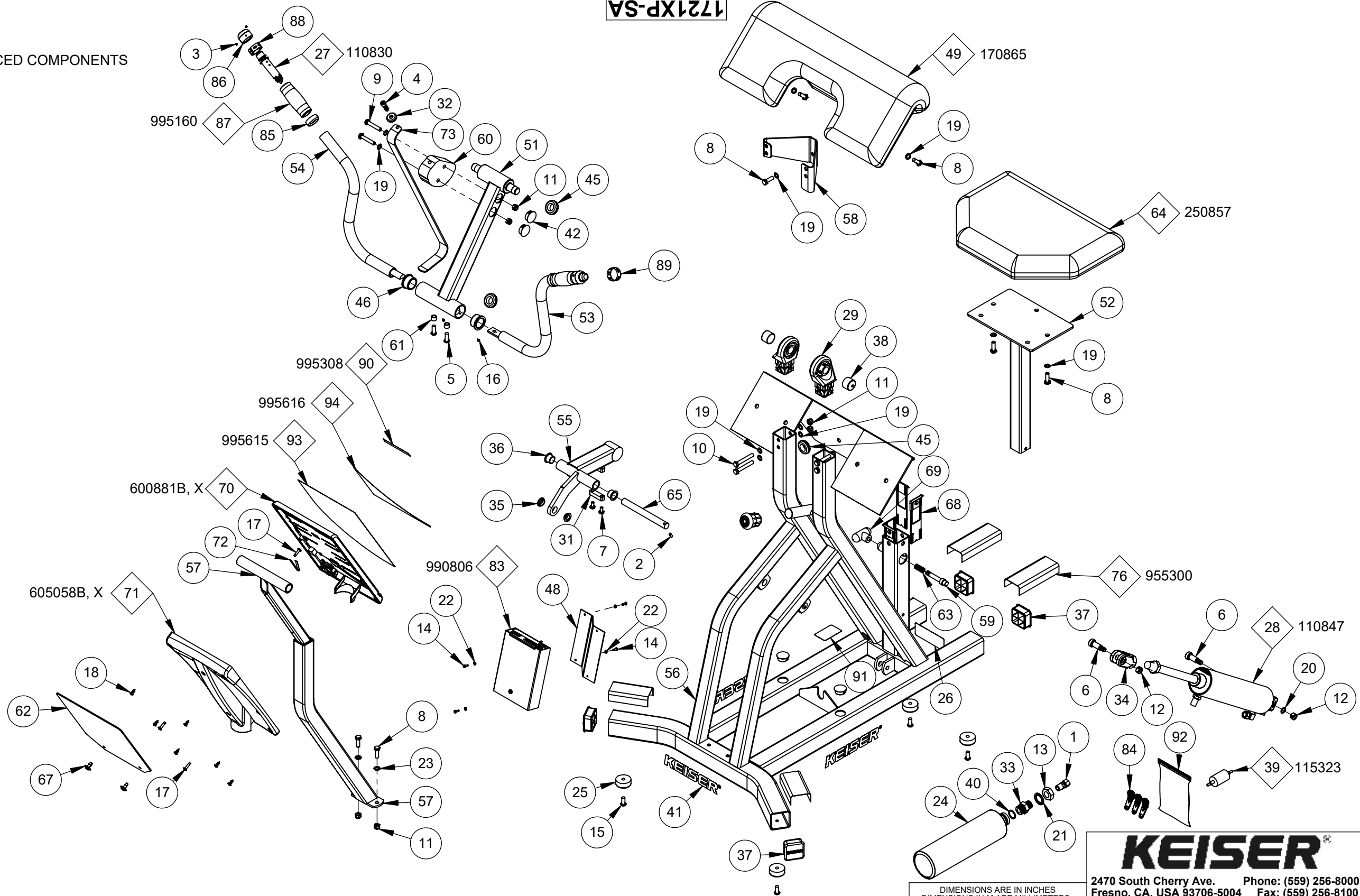


1721XP-SA

COMMONLY SERVICED COMPONENTS



NOTE:

- (1) THIS DRAWING COVERS: 1721BP, 1721PP, AND 1721SP
- (2) FOLLOW ALL TOP LEVEL PROCEDURES

A	3916	RFP		LMG	LC	7/16/21
REV	ECO		REVISION DESCRIPTION	BY	CKD	DATE

DIMENSIONS ARE IN INCHES
 DIMENSIONS IN [] ARE MILLIMETERS
 BREAK SHARP EDGES .005-.015 [.10-.40]
 MACHINED SURFACE FINISH IS
 63 MICROINCHES [1.6 MICROMETERS]
 DO NOT SCALE DRAWING

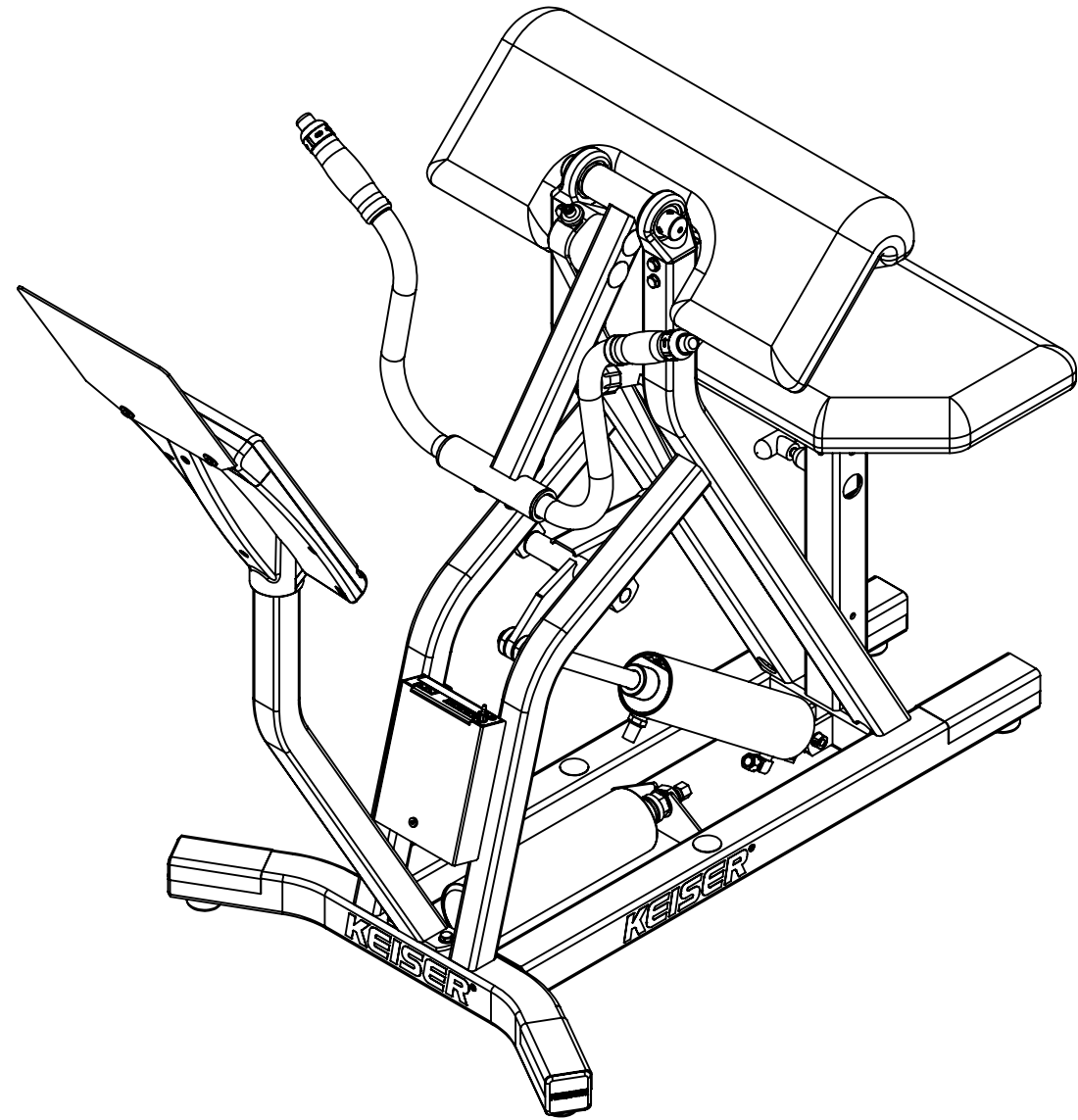
DRAWN BY: LMG	DATE DRAWN: 6/28/21	CHECKED BY: LC	DATE CHECKED: 7/16/21
MATERIAL:		RAW MAT:	
MASS (Kg):			
TITLE: A250 ARM CURL - PWR-SA		SCALE: 1:10	DRAWING SIZE: B
SHEET 1 OF 2		PART#: 1721XP-SA	

KEISER®
 2470 South Cherry Ave. Phone: (559) 256-8000
 Fresno, CA, USA 93706-5004 Fax: (559) 256-8100
 THE INFORMATION DISCLOSED HEREIN WAS ORIGINATED BY
 AND IS THE PROPERTY OF KEISER CORP. AND ALL PATENT,
 PROPRIETARY, DESIGN, USE, SALE, MANUFACTURING, AND
 REPRODUCTION RIGHTS THERETO ARE RESERVED BY KEISER
 CORP.

X:\drawings\REVISION17_ARM_CURL PRINTED ON: 7/16/2021 SW2006 V5.1

ITEM NO.	QTY.	PART NO.	TITLE	ITEM NO.	QTY.	PART NO.	TITLE
1	1	8079	CON - 3/8C X 1/4M	64	1	250857	HEAD CUSHION
2	1	9001	PIN SPRING - 3/16 X 1/2	65	1	252181	SHAFT - 0.625 X 6.000
3	8	9014	SCREW - HSSS 8-32 X 1/8 SS	66	1	265310	Y CONNECTOR - 1/8 DIA-PL
4	1	9101	SCREW - SHCS 5/16-18 X 1 ZP	67	2	265404	PLASTIC RIVET
5	2	9109	SCREW - SBHCS 5/16-24 X 7/8 ZP	68	4	505068	BUSHING - 4 PIECE
6	2	9127	SCREW - SHSS 1/2 X 1 ZP	69	1	555059	KNOB - T-BLACK
7	2	9150	SCREW - HHCS 1/4-20 X 1/2 ZP	70	1	600881X	DISPLAY BOX - 5 WIN
8	7	9176	SCREW - HHCS 5/16-18 X 1 ZP	71	1	605058	DISPLAY BOX - BACK-W/HOLES
9	2	9177	SCREW - HHCS 5/16-18 X 1-3/4 ZP	72	1	605428	GROUND CLAMP - DISPLAY
10	4	9179	SCREW - HHCS 5/16-18 X 2-1/4 ZP	73	1	950510	KEVLAR BELT 1
11	8	9226	NUT - HELN 5/16-18 ZP	74	1	953101	TUBING - .375 OD X .062 W-PE BLK
12	2	9227	NUT - HRLN 3/8-16 ZP	75	1	953108	TUBING - 1/4 URETHANE BLK
13	1	9231	NUT - HJN 3/4-10 ZP	76	1	955300	STRIP - PROTECTOR-4 INCH
14	4	9272	SCREW - CRPHTS-TF #6-32 X 1/2 SS	77	1	962004	CON - 2MM-2-S
15	4	9279	SCREW - SBHTS-TF 5/16-18 X 3/4 ZP	78	1	962005	CON - MOD - P-4P-4C
16	2	9284	SCREW - CRFHMS TAB 4-24 X 0250 SS	79	1	962016	CON - MOD-COUPLER-6-6
17	3	9285	SCREW - CRPHTS 10-24 X 3/4 ZP	80	1	962017	CON-MOD-P-6P-6C
18	6	9291	SCREW - CRPHTS 8 X 1/2 ZP	81	1	966701	WIRE - CABLE-4-26 GA
19	15	9353	WASHER - ACFT-5/16 ZP	82	1	966702	WIRE - CABLE-6-26 GA
20	1	9355	WASHER - FW-ACFT-3/8 SS	83	1	990806	ASSY - PROCESSOR BOX
21	1	9364	WASHER - ITLW 3/4 ZP	84	3	990812	KEY - DATA-CS
22	4	9366	WASHER - ITLW #6 ZP	85	2	995000	COLLAR - GRIP
23	2	9389	WASHER - ITLW 5/16 ZP	86	2	995001	CAP - GRIP W HOLE
24	1	100903	TANK - 72 IN3	87	2	995160	GRIP - MOLDED
25	4	105423	BUMPER - MOLDED GLIDE	88	1	995300	DECAL - TB-PLUS
26	1	105443	DECAL - SERIAL NUMBER	89	1	995301	DECAL - TB-MINUS
27	2	110830	ASSY - TB VALVE-DIG	90	1	995308	DECAL - SEAT-POWER
28	1	110847	ASSY - EC-2.5 X 7	91	1	995324	DECAL - MADE IN THE USA
29	2	110894	BEARING ASSY	92	1	995418	BAG - 4 X 6 X 4MIL-ZIP LOCK
30	1	110897	ASSY - QD-MALE	93	1	995615	PLACARD - ENG-POWER-BLK
31	1	111896	CLAMP W/HOLE	94	1	995616	PLACARD - ENG-KEY-RED
32	1	112242	CLAMP DISC				
33	1	115000	BUSHING - TANK				
34	1	115005	CLEVIS - CYLINDER-2-1/2				
35	2	115051	BEARING - FLANGE-.5 ID				
36	2	115052	BEARING - FLANGE-.625 ID				
37	4	115054	PLUG - 2 IN SQ-KEISER				
38	2	115067	CAP - Ø 1 X 3/4				
39	1	115323	FILTER - IN LINE				
40	1	115333	O-RING - .943 X .737 X .103				
41	3	115372	DECAL - KEISER LOGO-1 1/4" RED				
42	4	115404	PLUG - HOLE-1 DIA				
43	11	115423	TIE - 8 IN-PL BLK				
44	1	115429	PLASTIC TIE - 10" RED				
45	3	115463	GROMMET - 075106013				
46	2	135050	BEARING - FLANGE-1" ID				
47	1	135422	RUBBER CRUTCH TIP - #20 BLK				
48	1	151825	ELECTRONIC BRACKET				
49	1	170865	ARM CHEST CUSHION				
50	1	170891	ASSY - MUFFLER-LONG				
51	1	170900	WELDT - EX ARM				
52	1	170904	SEAT SS				
53	1	170929	HANDLE - LT				
54	1	170930	HANDLE - RT				
55	1	170931	LEVER ARM				
56	1	170933	MAIN FRAME				
57	1	170938	WELDT - DISPLAY MT				
58	1	172021	ARM REST BRKT				
59	1	172180	PLUNGER				
60	1	175000	CAM				
61	2	175054	Ø1/2 X 3/8 SLEEVE				
62	1	175416	PLACARD - A250 ARM CURL				
63	1	175500	SPRING - PLUNGER				

1721XP-SA



PRINTED ON: 7/16/2021 SW2006 V5.1

X:\drawings\REVISION17_ARM_CURL

KEISER®

2470 South Cherry Ave. Phone: (559) 256-8000
 Fresno, CA, USA 93706-5004 Fax: (559) 256-8100

THE INFORMATION DISCLOSED HEREIN WAS ORIGINATED BY AND IS THE PROPERTY OF KEISER CORP. AND ALL PATENT, PROPRIETARY, DESIGN, USE, SALE, MANUFACTURING, AND REPRODUCTION RIGHTS THERETO ARE RESERVED BY KEISER CORP.

DIMENSIONS ARE IN INCHES
 DIMENSIONS IN [] ARE MILLIMETERS
 BREAK SHARP EDGES .005-.015 [.10-.40]
 MACHINED SURFACE FINISH IS
 63 MICROINCHES [1.6 MICROMETERS]
 DO NOT SCALE DRAWING

DRAWN BY: LMG	DATE DRAWN: 6/28/21	CHECKED BY: LC	DATE CHECKED: 7/16/21
---------------	---------------------	----------------	-----------------------

MATERIAL:
 RAW MAT: MASS (Kg):

REV	ECO	RFP	LMG	LC	7/16/21	TITLE:
A	3916	RFP	LMG	LC	7/16/21	A250 ARM CURL - PWR-SA
REV	ECO	REVISION DESCRIPTION	BY	CKD	DATE	SHEET 2 OF 2

TITLE: **A250 ARM CURL - PWR-SA**
 SCALE: **1:8**
 DRAWING SIZE: **B**
 PART#: **1721XP-SA**