

- 44 1 4 6 7 11 12 13 14 20
- 21 22 24 25 28 30 31 33 35 38
- 39 40 45 46 48 51 53 56 57 58
- 59 60 61 64 65 67 68 69 70 72
- 73 74 76 77 78

- 43 1 4 6 7 11 12 13 14 20
- 21 22 24 25 28 30 31 33 35 38
- 39 40 45 48 51 53 56 58 59 60
- 61 64 65 67 68 69 70 72 73 76
- 77 78

SHEET <b>1</b> OF <b>1</b>	REV <b>B</b>	ECO <b>2714</b>	MODEL #: <b>5500XXX</b>	TITLE: <b>EC RWD BIKE</b>
FROM SERIAL NUMBER: <b>060822-05004</b>	TO: <b>070614-14730</b>	DATE FROM: <b>8/22/2006</b>	TO: <b>6/14/2007</b>	

PRINTED ON: 9/24/2007 X:\drawings\\_REVISION\55\_EC\_RWD\_BIKE\

Item No	Part No	Description	Qty	Item No	Part No	Description	Qty
1	9253	SCREW - CRPHMS 10-32 X 3/16 SS	9	58	555054	SHIFTER - R	1
2	9261	SCREW - CRPHMS 10-32 X 3/8 SS	1	59	555055	SHIFTER - L	1
3	9279	SCREW - SBHTS-TF 5/16-18 X 3/4 ZP	4	60	555056	PIN - MF-5/16 SQ X 2 1/8	1
4	9287	SCREW - CRPHTS-TF 10-24 X 3/4 SS	1	61	555058	BUSHING - SHORT	2
5	9303	SCREW-CRPHTCS-T25 4 X 3/8 SS	4	62	555060	GUARD - SWEAT-HANDLEBAR	1
6	9304	SCREW - CRFCS-PLASTITE 4-20 X 3/8 SS	1	63	555063S	FACE - DISPLAY-COMPUTER-SILVER	1
7	9344	WASHER - FW-USS 5/16 ZP	2	64	555370	LABEL - DOME-KEISER	1
8	9369	WASHER - FW-ACFT 5/16 SS	4	65	555371	DECAL - CAUTION-PEDAL TORQUE	1
9	9384	WASHER - FW-ACFT 7/16 SS	4	66	555372	DECAL - WARNING - RIDING & SLIDER	1
10	555022	NUT - HAN-HC 7/16-20 SS	4	67	555374	DECAL - HANDLEBAR-POSITION	1
11	9500	SCREW - SHCS M6x1 X 10 SS	7	68	555402	BEARING - 6004ZZ-SHIELDED	2
12	9502	SCREW - SHCS M6x1 X 20 SS	9	69	555405	SPRING - TORSION	1
13	9509	NUT - HELN M6x1 ZP	4	70	555406	BELT - POLY V	1
14	9511	SCREW - HHCS M8x1.25 X 16 ZP	2	71	555407	WHEEL - 3 IN	2
15	9513	SCREW - BHSCS M8x1.25 X 12 SS	2	72	555410	PAD - BRAKE-FRICTION	1
16	9516	SCREW - BHSCS M8x1.25 X 40 SS	2	73	555411	SHIFT CABLE	1
17	9519	NUT - HAN-HC M8x1.25 SS	2	74	555413	CORD - COMP TO PICKUP	1
18	9982	NUT - HEAVY SQ. 3/8-16 SS	1	75	555417	SADDLE	1
19	105423	BUMPER - MOLDED GLIDE	4	76	555419	SCREW - HSPSS-M10x1.5 X 16 BLK	2
20	105443	DECAL - SERIAL NUMBER	1	77	555420	SWEAT STRIP - 5/16 X 3/8	1
21	105550	THREAD SEALANT - LOCTITE 242	1	78	555421	CRANK ARM - L	1
22	115036	THREADED INSERT - 5/8 X 3/8 SS	2	79	605051	PLUG - GRIP	4
23	115054	PLUG - 2 IN SQ-KEISER	4	80	966502	BATTERY - AA-CELL	2
24	505063	PIN - HANDLEBAR-DIA 1/4 X 1-3/4	1	81	550815	HANDLEBAR	1
25	505068	BUSHING - 4 PIECE	6	82	555426	HANDLE - FLAT CLAMP	1
26	505173	STRAP - PEDAL	1				
27	505444	TOE CLIP & STRAP ASSY	1				
28	505480	RIVET - 1/4 X 3/4 REM PLUG	2				
29	540831	PEDAL SET - COMBO	1				
30	543091	HOSE - SPACER-LONG	2				
31	545420	SCREW - HWHS M8x1 X 22 CS	2				
32	550802G	BACK - DISPLAY-COMPUTER-GRAY	1				
33	550804	PULLEY - IDLER	1				
34	550807	SA - SEATPOST	1				
35	550808	SA - HUB-FLYWHEEL	1				
36	550809	SA - HANDLEBAR (SEE NOTE 1)	1				
37	550810	SA - KNOB (SEE NOTE 2)	2				
38	550811	SA - PULLEY-330MM	1				
39	550812	SA - MAGNET HOLDER	1				
40	550813	SA - CRANK ARM-R AXLE SET	1				
41	550814	SA - FRAME-BASE	1				
42	555050G	SA - COVER-LOWER-MF	1				
43	550819	SA - MAIN FRAME - PXN	1				
44	550820	SA - MAIN FRAME - PXC	1				
45	550902	HANDLEBAR - ADJ TUBE	1				
46	550904	CKT BRD - PICKUP	1				
47	550905	CKT BRD - COMPUTER	1				
48	555000	PLATE - FRICTION	2				
49	555003	FLYWHEEL	1				
50	555005	HUB CAP - FLYWHEEL	1				
51	555008	MAGNET COVER	1				
52	555009	SLIDER - SEAT	1				
53	555011	PLATE - MAGNET SUPPORT	1				
54	555017S	MOUNT - DISPLAY-COMPUTER-SILVER	1				
55	555051B	COVER - BELT-MAIN-BLK	1				
56	555052B	COVER - BELT-INNER-BLK	1				
57	555053	GEAR - POT	1				

TITLE: **EC RWD BIKE**

MODEL #: **5500XXX**

REV **B**

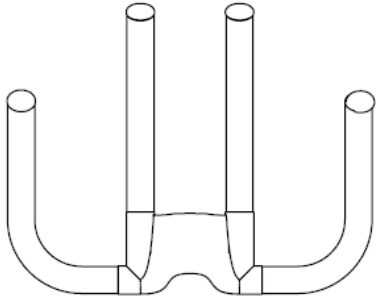
ECO **2714**

FROM SERIAL NUMBER: **060822-05004** TO: **070614-14730**

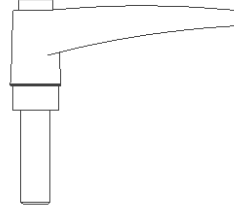
DATE FROM: **8/22/2006** TO: **6/14/2007**

NOTES: (1) REPLACED BY ITEM 81

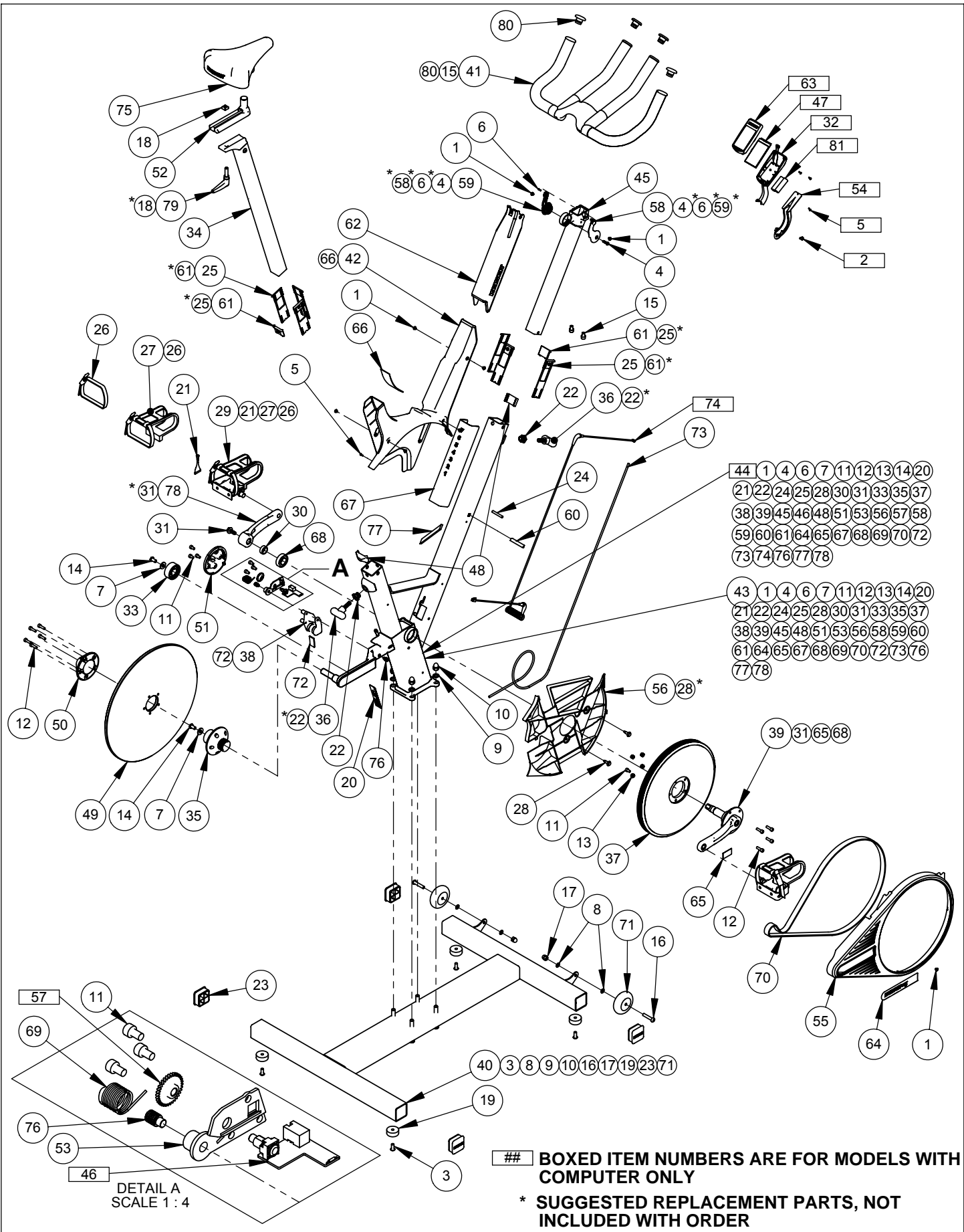
(2) QTY 1 REPLACED BY ITEM 82 ON THE FRONT TO BACK SEAT ADJUSTMENT ONLY.



ITEM 81  
REPLACES ITEM  
36



ITEM 82 REPLACES 1 OF  
ITEM 37 ON THE FRONT TO  
BACK SEAT ADJUSTMENT  
ONLY



- 44 1 4 6 7 11 12 13 14 20
- 21 22 24 25 28 30 31 33 35 37
- 38 39 45 46 48 51 53 56 57 58
- 59 60 61 64 65 67 68 69 70 72
- 73 74 76 77 78

- 43 1 4 6 7 11 12 13 14 20
- 21 22 24 25 28 30 31 33 35 37
- 38 39 45 48 51 53 56 58 59 60
- 61 64 65 67 68 69 70 72 73 76
- 77 78

DETAIL A  
SCALE 1 : 4

## BOXED ITEM NUMBERS ARE FOR MODELS WITH COMPUTER ONLY  
\* SUGGESTED REPLACEMENT PARTS, NOT INCLUDED WITH ORDER

SHEET 1 OF 1	REV B	ECO 2714	MODEL #: 5500XXX	TITLE: EC RWD BIKE
FROM SERIAL NUMBER: 070614-14731	TO:	DATE FROM: 6/14/2007	TO: PRESENT	

PRINTED ON: 10/10/2007  
X:\drawings\\_REVISION\55\_EC\_RWD\_BIKE

Item No	Part No	Description	Qty	Item No	Part No	Description	Qty
1	9253	SCREW - CRPHMS 10-32 X 3/16 SS	9	58	555054	SHIFTER - R	1
2	9261	SCREW - CRPHMS 10-32 X 3/8 SS	1	59	555055	SHIFTER - L	1
3	9279	SCREW - SBHTS-TF 5/16-18 X 3/4 ZP	4	60	555056	PIN - MF-5/16 SQ X 2 1/8	1
4	9287	SCREW - CRPHTS-TF 10-24 X 3/4 SS	1	61	555058	BUSHING - SHORT	2
5	9303	SCREW-CRPHTCS-T25 4 X 3/8 SS	4	62	555060	GUARD - SWEAT-HANDLEBAR	1
6	9304	SCREW - CRFCS-PLASTITE 4-20 X 3/8 SS	1	63	555063S	FACE - DISPLAY-COMPUTER-SILVER	1
7	9344	WASHER - FW-USS 5/16 ZP	2	64	555370	LABEL - DOME-KEISER	1
8	9369	WASHER - FW-ACFT 5/16 SS	4	65	555371	DECAL - CAUTION-PEDAL TORQUE	1
9	9384	WASHER - FW-ACFT 7/16 SS	4	66	555372	DECAL - WARNING - RIDING & SLIDER	1
10	555022	NUT - HAN-HC 7/16-20 SS	4	67	555374	DECAL - HANDLEBAR-POSITION	1
11	9500	SCREW - SHCS M6x1 X 10 SS	7	68	555402	BEARING - 6004ZZ-SHIELDED	2
12	9502	SCREW - SHCS M6x1 X 20 SS	9	69	555405	SPRING - TORSION	1
13	9509	NUT - HELN M6x1 ZP	4	70	555406	BELT - POLY V	1
14	9511	SCREW - HHCS M8x1.25 X 16 ZP	2	71	555407	WHEEL - 3 IN	2
15	9513	SCREW - BHSCS M8x1.25 X 12 SS	2	72	555410	PAD - BRAKE-FRICTION	1
16	9516	SCREW - BHSCS M8x1.25 X 40 SS	2	73	555411	SHIFT CABLE	1
17	9519	NUT - HAN-HC M8x1.25 SS	2	74	555413	CORD - COMP TO PICKUP	1
18	9982	NUT - HEAVY SQ. 3/8-16 SS	1	75	555417	SADDLE	1
19	105423	BUMPER - MOLDED GLIDE	4	76	555419	SCREW - HSPSS-M10x1.5 X 16 BLK	2
20	105443	DECAL - SERIAL NUMBER	1	77	555420	SWEAT STRIP - 5/16 X 3/8	1
21	105550	THREAD SEALANT - LOCTITE 242	1	78	555421	CRANK ARM - L	1
22	115036	THREADED INSERT - 5/8 X 3/8 SS	2	79	555426	HANDLE - FLAT CLAMP	1
23	115054	PLUG - 2 IN SQ-KEISER	4	80	605051	PLUG - GRIP	4
24	505063	PIN - HANDLEBAR-DIA 1/4 X 1-3/4	1	81	966502	BATTERY - AA-CELL	2
25	505068	BUSHING - 4 PIECE	6				
26	505173	STRAP - PEDAL	1				
27	505444	TOE CLIP & STRAP ASSY	1				
28	505480	RIVET - 1/4 X 3/4 REM PLUG	2				
29	540831	PEDAL SET - COMBO	1				
30	543091	HOSE - SPACER-LONG	2				
31	545420	SCREW - HWHS M8x1 X 22 CS	2				
32	550802G	BACK - DISPLAY-COMPUTER-GRAY	1				
33	550804	PULLEY - IDLER	1				
34	550807	SA - SEATPOST	1				
35	550808	SA - HUB-FLYWHEEL	1				
36	550810	SA - KNOB	2				
37	550811	SA - PULLEY-330MM	1				
38	550812	SA - MAGNET HOLDER	1				
39	550813	SA - CRANK ARM-R AXLE SET	1				
40	550814	SA - FRAME-BASE	1				
41	550815	SA - HANDLEBAR	1				
42	555050G	SA - COVER-LOWER-MF	1				
43	550819	SA - MAIN FRAME - PXN	1				
44	550820	SA - MAIN FRAME - PXC	1				
45	550902	HANDLEBAR - ADJ TUBE	1				
46	550904	CKT BRD - PICKUP	1				
47	550905	CKT BRD - COMPUTER	1				
48	555000	PLATE - FRICTION	2				
49	555003	FLYWHEEL	1				
50	555005	HUB CAP - FLYWHEEL	1				
51	555008	MAGNET COVER	1				
52	555009	SLIDER - SEAT	1				
53	555011	PLATE - MAGNET SUPPORT	1				
54	555017S	MOUNT - DISPLAY-COMPUTER-SILVER	1				
55	555051B	COVER - BELT-MAIN-BLK	1				
56	555052B	COVER - BELT-INNER-BLK	1				
57	555053	GEAR - POT	1				

TITLE: **EC RWD BIKE**

MODEL #: **5500XXX**

REV **B**

ECO **2714**

FROM SERIAL NUMBER: **070614-14731** TO:

DATE FROM: **6/14/2007** TO: **PRESENT**