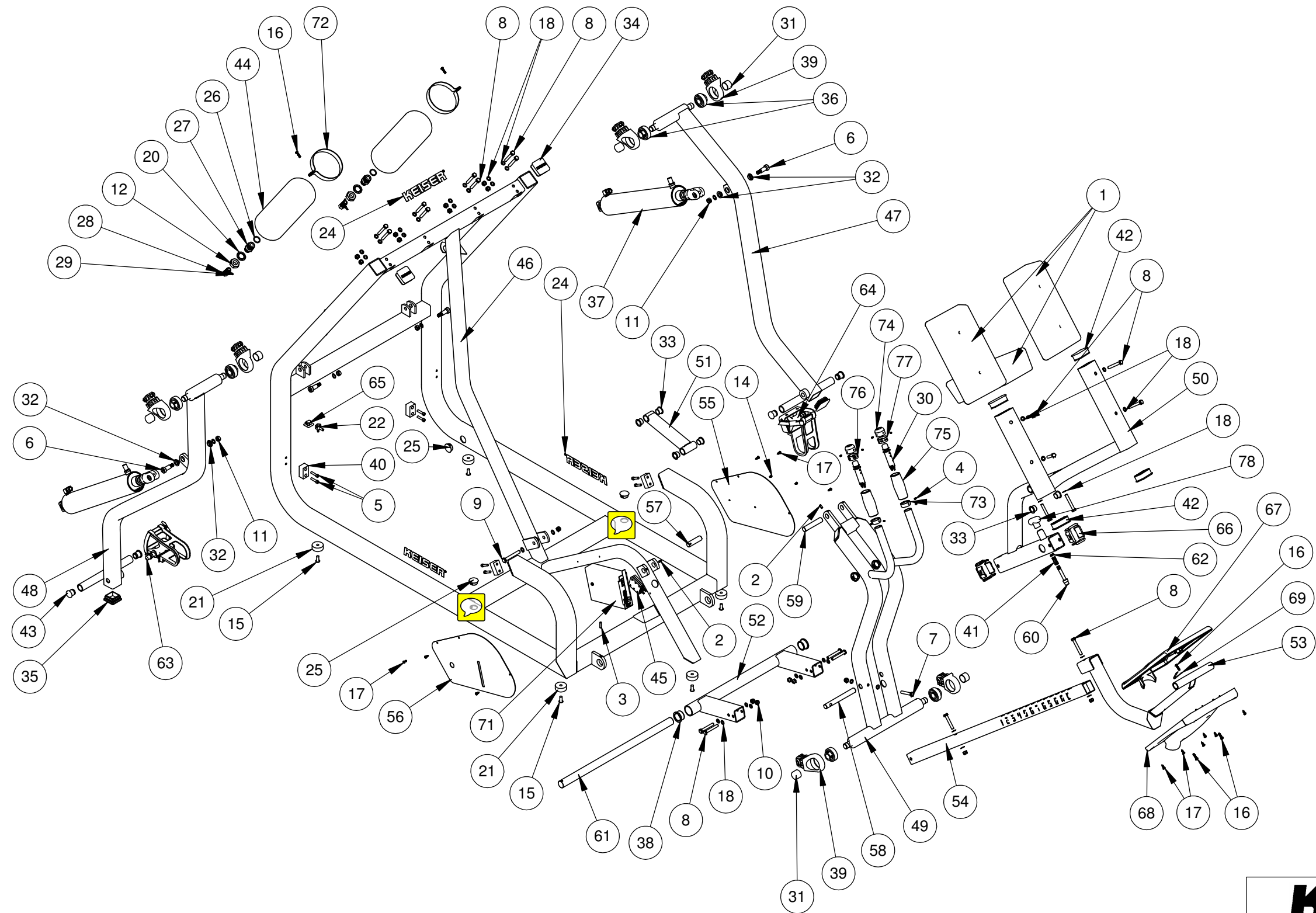


X



X:\drawings\PROTOTYPE\32_RUNNER PRINTED ON: 3/24/2009 SW2001 V5

KEISER®

2470 South Cherry Ave. Phone: (559) 256-8000
Fresno, CA, USA 93706-5004 Fax: (559) 256-8100

THE INFORMATION DISCLOSED HEREIN WAS ORIGINATED BY AND IS THE PROPERTY OF KEISER CORP. AND ALL PATENT, PROPRIETARY, DESIGN, USE, SALE, MANUFACTURING, AND REPRODUCTION RIGHTS THERE TO ARE RESERVED BY KEISER CORP.

DIMENSIONS ARE IN INCHES
DIMENSIONS IN [] ARE MILLIMETERS
BREAK SHARP EDGES .005-.015 [.10-.40]
MACHINED SURFACE FINISH IS
63 MICROINCHES [1.6 MICROMETERS]
DO NOT SCALE DRAWING

DRAWN BY:	X	DATE DRAWN:	X	CHECKED BY:	X	DATE CHECKED:	X
-----------	---	-------------	---	-------------	---	---------------	---

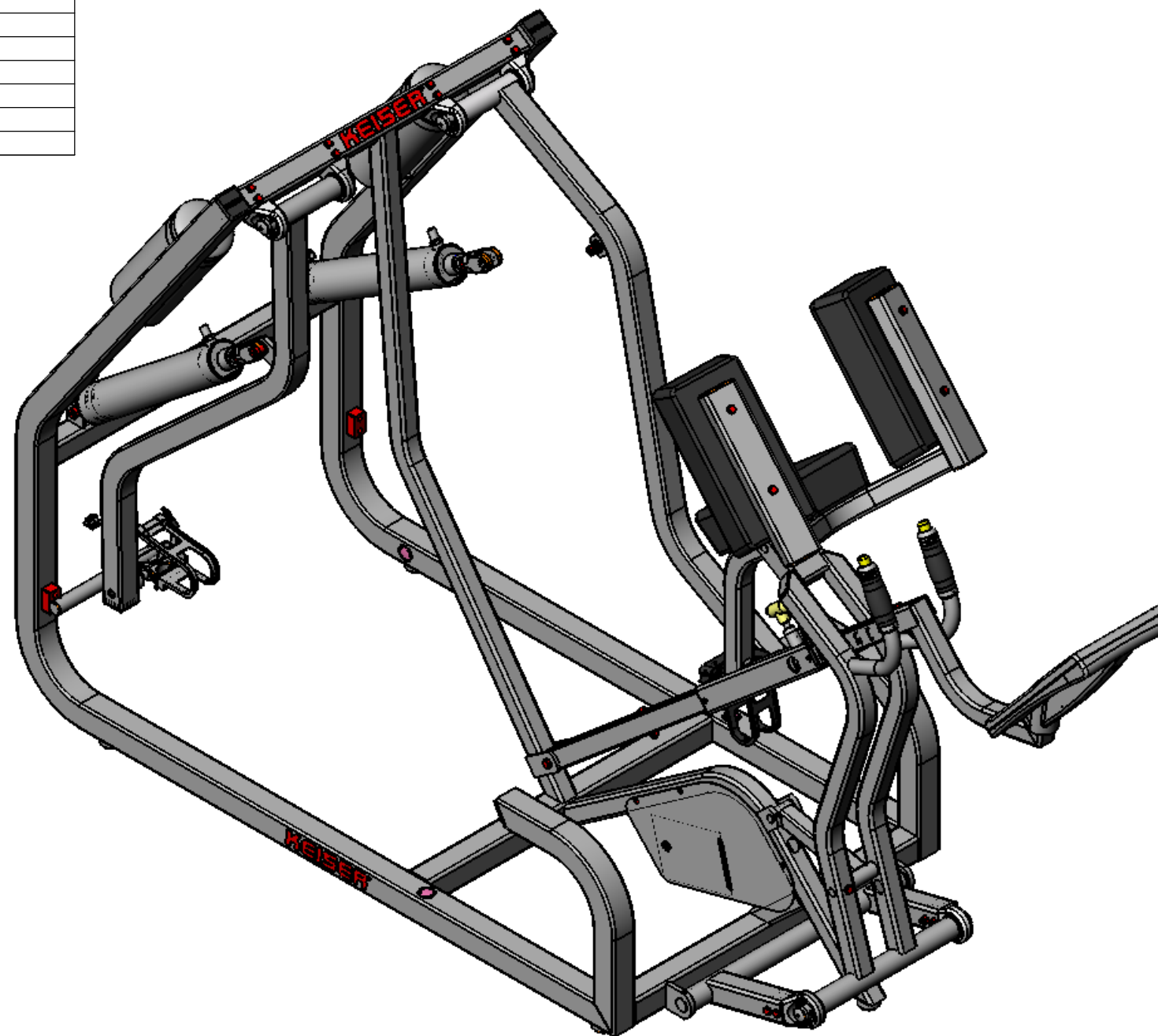
MATERIAL:	
RAW MAT:	

TITLE:	X						
SHEET	1 OF 2	SCALE:	1:15	DRAWING SIZE:	A	PART#:	X

REV	ECO	REVISION DESCRIPTION	BY	CKD	DATE

ITEM NO.	QTY.	DS	PART NO.	TITLE	ITEM NO.	QTY.	DS	PART NO.	TITLE
1	3	X	150850	SHOULDER CUSHION	65	1	A	545055	ANCHOR - CABLE PL
2	2	-	9001	PIN-SPRING - 3/16 X 1/2	66	8	A	555058	BUSHING - SHORT
3	1	-	9002	PIN-SPRING - 3/16 X 7/8	67	1	A	600882	DISPLAY BOX - 2 WIN
4	8	-	9044	SCREW - HSSS 6-32 X 1/4	68	1		605058	DISPLAY BOX - BACK-W HOLES
5	8	-	9108	SCREW - SHCS 1/4-20 X 1 ZP	69	1	A	605428	GROUND CLAMP - DISPLAY
6	4	-	9127	SCREW - SHSS 1/2 X 1 ZP	70	1	A	955300	STRIP - PROTECTOR-4 INCH
7	2	-	9178	SCREW - HHCS 5/16-18 X 2 GR5 ZP	71	1	B	990806	ASSY - PROCESSOR BOX
8	19	-	9179	SCREW - HHCS 5/16-18 X 2-1/4 ZP	72	2	A	992050	STRAP - TANK
9	1	-	9208	SCREW - HHCS 3/8-16 X 2-3/4 ZP	73	2	A	995000	COLLAR - GRIP
10	16	-	9226	NUT - HELN 5/16-18 ZP	74	2	A	995001	CAP - GRIP W HOLE
11	4	-	9227	NUT - HRLN 3/8-16 ZP	75	2	A	995160	GRIP - MOLDED
12	2	-	9231	NUT - HJN 3/4-10 ZP	76	1	A	995300	DECAL - TB-PLUS
13	2	-	9248	NUT - HMSN #6-32 ZP	77	1	A	995301	DECAL - TB-MINUS
14	2	-	9255	SCREW - CRPHMS #6-32 X 1/4 ZP	78	1	A	995400	KNOB - T-YELLOW
15	5	-	9279	SCREW - SBHTS-TF 5/16-18 X 3/4 ZP					
16	5	-	9285	SCREW - CRPHTS-TF 10-24 X 3/4 ZP					
17	12	-	9291	SCREW - CRPHTS 8 X 1/2 ZP					
18	36	-	9353	WASHER - FW ACFT 5/16 ZP					
19	6	-	9355	WASHER - FW ACFT 3/8 ZP					
20	2	-	9364	WASHER - ITLW 3/4 ZP					
21	5	A	105423	BUMPER - MOLDED GLIDE					
22	1	A	110897	ASSY - QD-MALE					
23	1	A	115323	FILTER - IN LINE					
24	3	A	115372	DECAL - KEISER LOGO					
25	5	A	115404	PLUG - HOLE-1 DIA					
26	2	A	115333	O-RING - .943 X .737 X .103					
27	2	A	115000	BUSHING - TANK					
28	2	A	115041	STRAIGHT - TAPPED- ϕ 3/8					
29	4	A	115019	BARBED CONNECTOR - 1/4 X #10-32					
30	2	B	110830	ASSY - TB VALVE-DIG					
31	6	A	115067	CAP - ϕ 1 X 3/4					
32	4	A	115051	BEARING - FLANGE-.5 ID					
33	6	A	115052	BEARING - FLANGE-.625 ID					
34	2	B	115054	PLUG - 2 IN SQ-KEISER					
35	2	A	115059	CAP - 1-3/4 SQ					
36	6	-	115394	BEARING - SPHERICAL- ϕ 3/4 ID					
37	2	A	130885	ASSY - CYL-2.5 X 12					
38	2	A	135050	BEARING - FLANGE-1" ID					
39	6	B	135407	HOUSING - BEARING					
40	4	A	165421	STOP - EA-URETHANE					
41	1	A	175500	SPRING - PLUNGER					
42	4	A	225053	CAP - 1.500 X 2.500-PL					
43	4	A	255051	CAP - ϕ 1-PL					
44	2								
45	1	A	320800	VALVE BLOCK					
46	1	B	320900	MAIN FRAME					
47	1	B	320901	L EX ARM					
48	1	B	320902	R EX ARM					
49	1	B	320903	SUPPORT - FRONT					
50	1	B	320904	SUPPORT - SHOULDER					
51	1	B	320905	LINK - UPPER					
52	1	B	320906	LINK - LOWER					
53	1	B	320907	DISPLAY MT					
54	1	A	320908	DISPLAY MT - LOWER					
55	1	B	322050	PLATE - MOUNT-PROCESSOR					
56	1	B	322051	PLATE - COVER-PROCESSOR					
57	1	A	322180	BAR - PIVOT SHAFT-1					
58	1	A	322181	BAR - PIVOT SHAFT-2					
59	1	A	322182	BAR - PIVOT SHAFT-3					
60	1	A	322183	BAR - PLUNGER-TAPERED					
61	1	A	322240	BAR - PIVOT SHAFT-MAIN FRM					
62	1	A	325051	BEARING - SNAP-IN-.375					
63	1	A	50-5464	Pedal Set - w Clip & Strap					
64	1	A	50-5403	Pedal Set - w Clip & Strap					

X



PRINTED ON: 3/24/2009 SW2001 V5

X:\drawings_PROTOTYPE\02_RUNNER

KEISER

2470 South Cherry Ave. Phone: (559) 256-8000
Fresno, CA, USA 93706-5004 Fax: (559) 256-8100

THE INFORMATION DISCLOSED HEREIN WAS ORIGINATED BY AND IS THE PROPERTY OF KEISER CORP. AND ALL PATENT, PROPRIETARY, DESIGN, USE, SALE, MANUFACTURING, AND REPRODUCTION RIGHTS THERETO ARE RESERVED BY KEISER CORP.

DIMENSIONS ARE IN INCHES
DIMENSIONS IN [] ARE MILLIMETERS
BREAK SHARP EDGES .005-.015 [.10-.40]
MACHINED SURFACE FINISH IS
63 MICROINCHES [1.6 MICROMETERS]
DO NOT SCALE DRAWING

DRAWN BY:	X	DATE DRAWN:	X	CHECKED BY:	X	DATE CHECKED:	X
-----------	---	-------------	---	-------------	---	---------------	---

MATERIAL:
RAW MAT:

TITLE: **X**

REV	ECO	REVISION DESCRIPTION	BY	CKD	DATE

SHEET **2** OF **2** SCALE: **1:32** DRAWING SIZE: **A** PART#: **X**